

JEFF GOLDING

Personal Real Estate Corporation

604.939.6666

jeff@jeffgolding.com

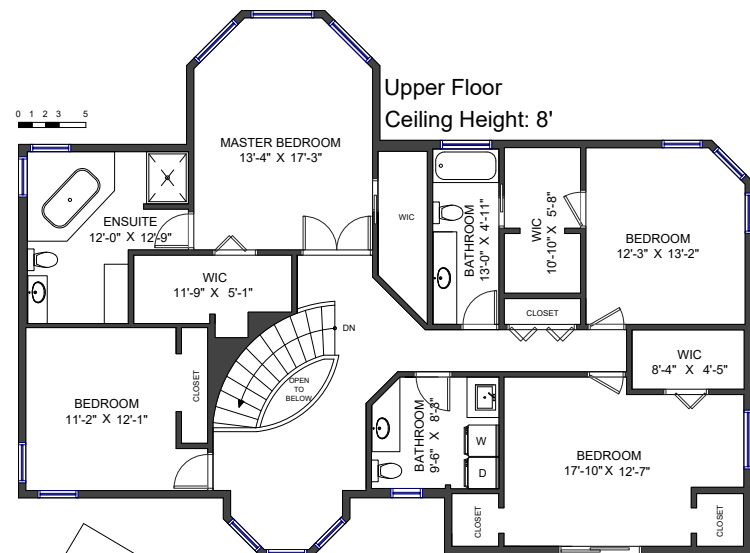
www.JeffGolding.com



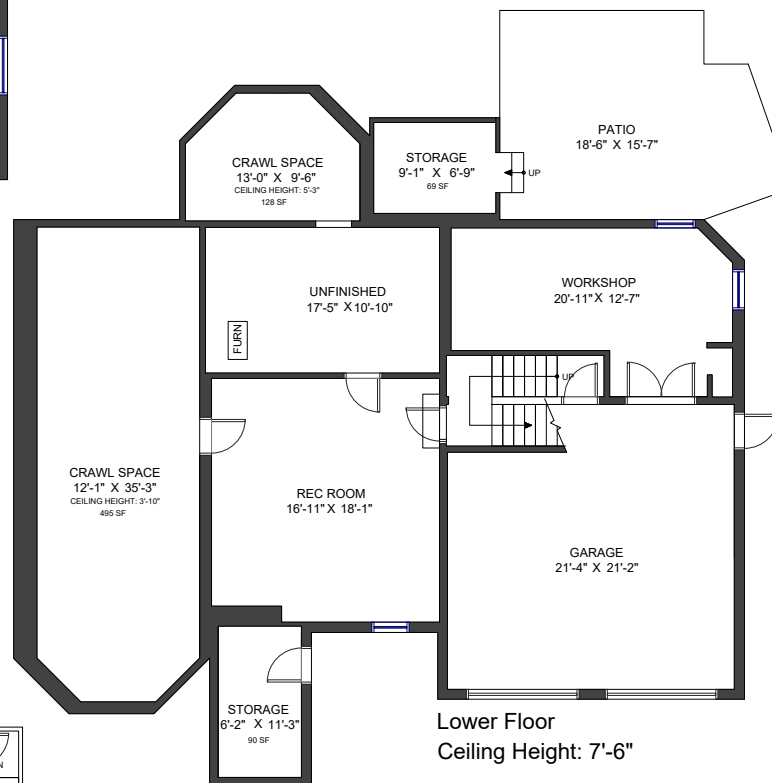
246 Moody Street Port Moody, BC

MAIN FLOOR	1,998 SF
UPPER FLOOR	1,679 SF
LOWER FLOOR	423 SF
LIVING AREA	4,100 SF
UNFINISHED AREA	213 SF
TOTAL AREA	4,313 SF

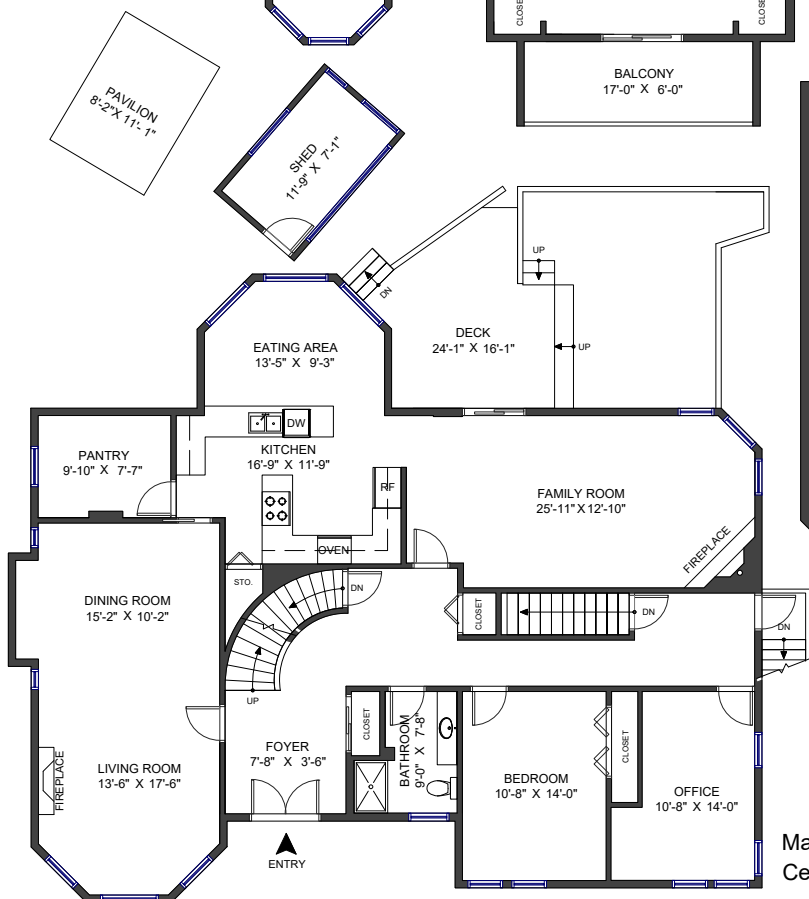
AUXILIARY AREA	2,489 SF
DECK	402 SF
PATIO	289 SF
BALCONY	114 SF
STORAGE	159 SF
WORKSHOP	242 SF
GARAGE	471 SF
CRAWL SPACE	623 SF
SHED	99 SF
PAVILION	90 SF



Upper Floor
Ceiling Height: 8'



Lower Floor
Ceiling Height: 7'-6"



Main Floor
Ceiling Height: 8'

Valid Until: June 10, 2024

All dimensions are approximate and not suitable for architectural/construction use. This is for marketing purposes only. The measurements are approximate within +/- 2%, E&O insured. Total square footage might be kept consistent with strata plan. It might include unfinished area and restricted headroom.

