

JEFF GOLDING

Personal Real Estate Corporation

604.939.6666

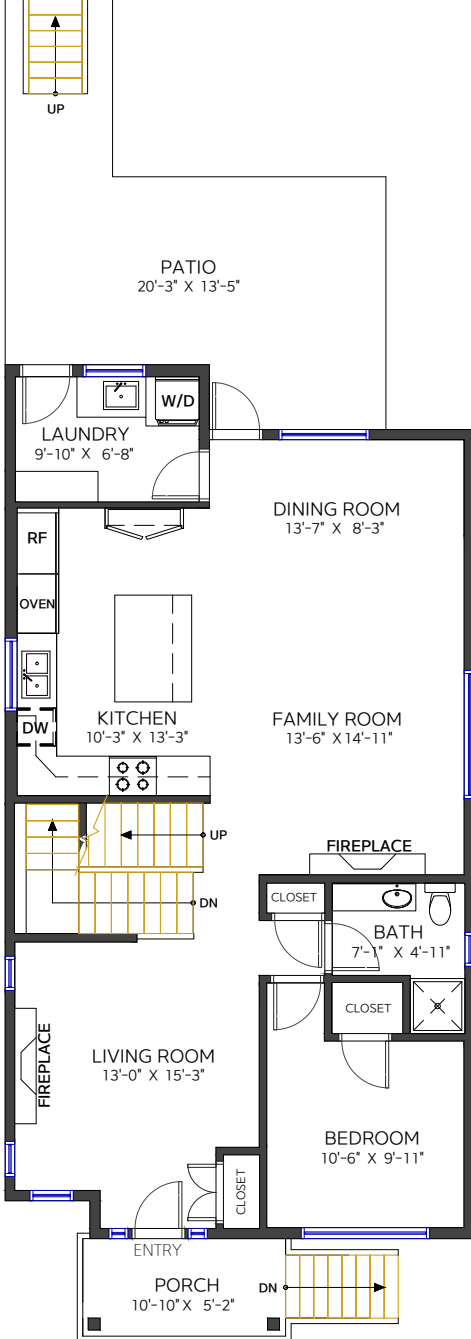
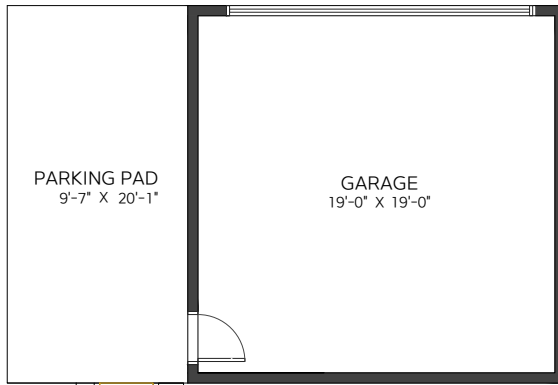
jeff@jeffgolding.com

www.JeffGolding.com

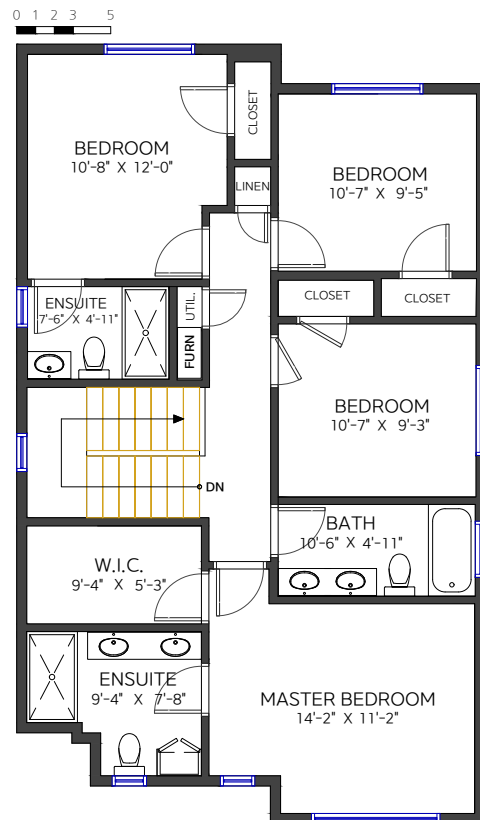


3421 Victoria Drive Coquitlam, BC

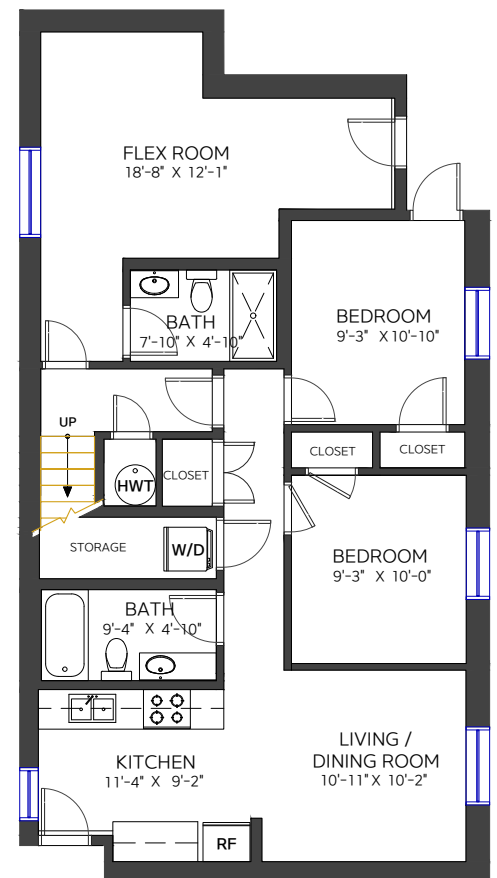
LIVING AREA	3,163 SF
MAIN FLOOR	1,108 SF
UPPER FLOOR	979 SF
LOWER FLOOR	1,076 SF
AUXILIARY AREA	832 SF
PATIO	235 SF
GARAGE	404 SF
PARKING PAD	193 SF



Main Floor
Ceiling Height: 9'



Upper Floor
Ceiling Height: 8'-0"



Lower Floor
Ceiling Height: 8'-0"

