



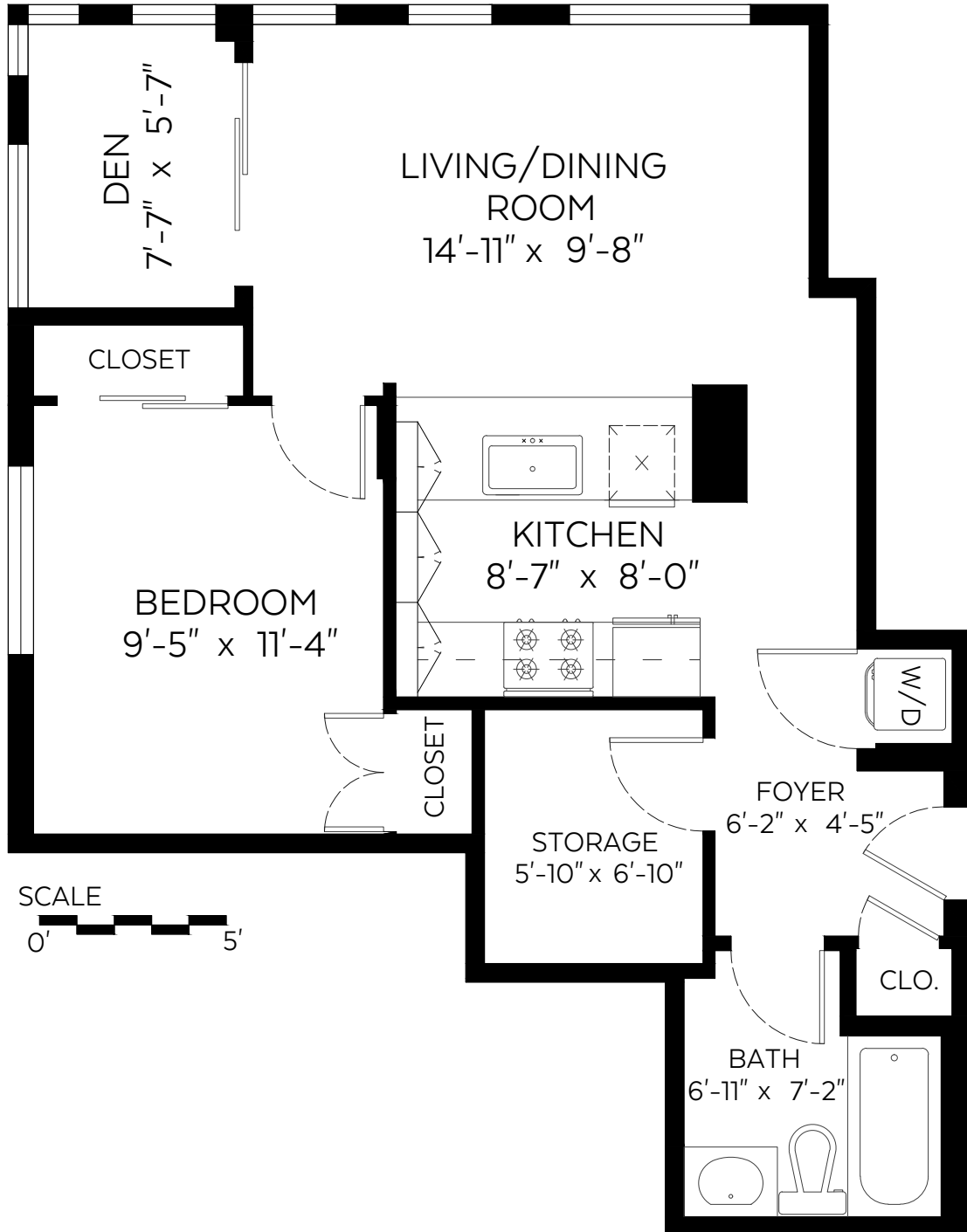
#609-535 Smithe Street
Vancouver, B.C.

Main Floor: 636 sq.ft.

Ammar Sedqui

REAL ESTATE ADVISOR

604.700.8727 ammars@remax.net
RE/MAX Crest Realty www.sedquirealty.com



Measured on: September 02, 2020



The floor plan is not suitable for architectural/construction and is covered under E&O. © Excelsior Measuring Inc. 2020. All rights reserved for Excelsior Measuring Inc. Users shall not publish and distribute such material (in whole or in part) and/or incorporate it in other works in any form.

