

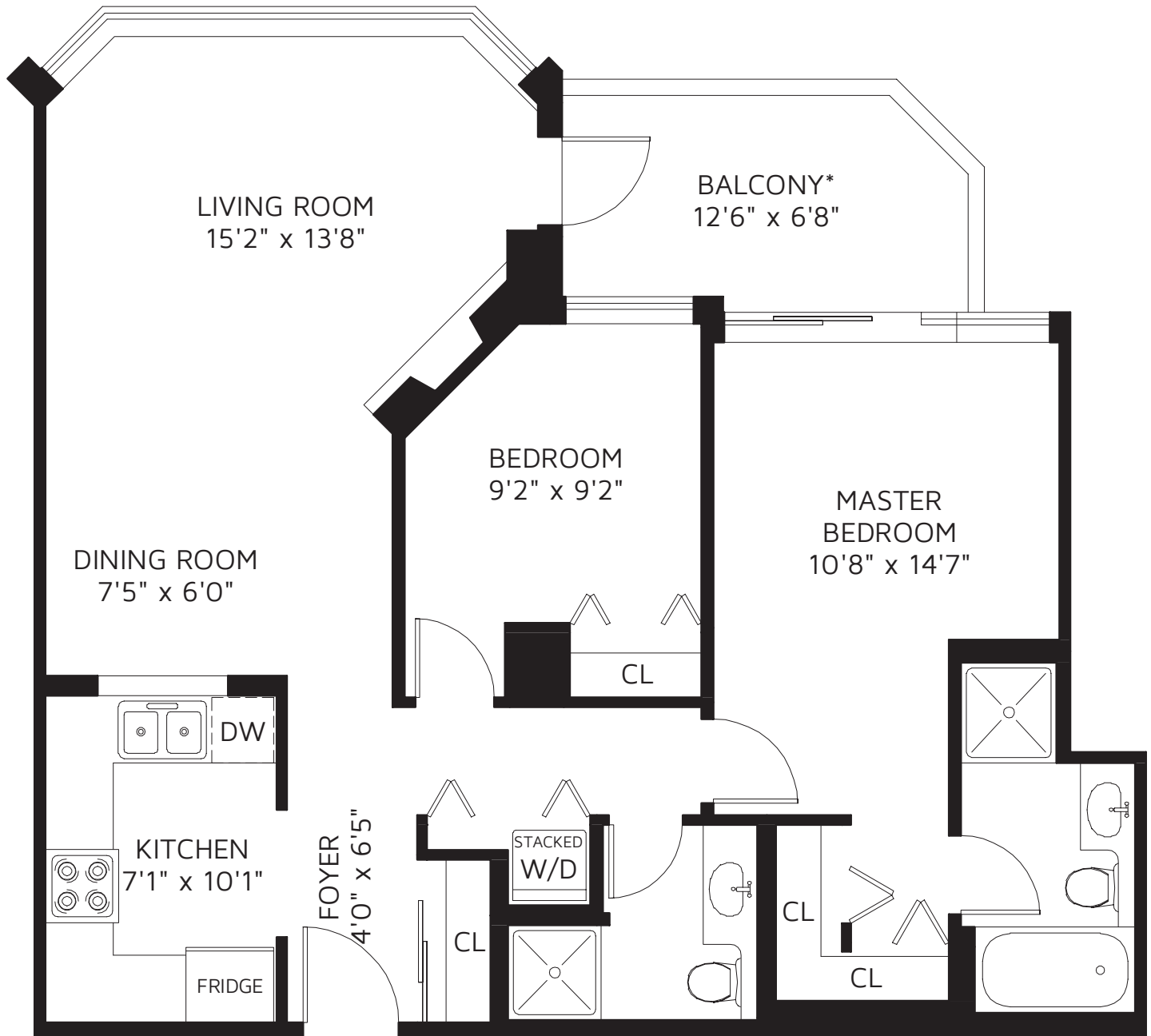
# Bijan Nagy

604-365-0185  
bijan@macrealty.com  
bijannagy.ca



## LAKESIDE TERRACE

1502 - 3070 GUILDFORD WAY, COQUITLAM, V3B 7R8



**TOTAL FINISHED AREA 883 SQ FT**

**BALCONY\* 88 SQ FT**

\*NOT INCLUDED IN OVERALL SQUARE FOOTAGE



FLOOR PLAN IS PROVIDED BY REAL MEASUREMENTS AND RENDERINGS. FOR PROMOTIONAL USE ONLY. NOT FOR ARCHITECTURAL OR CONSTRUCTION USE. AREA IS CALCULATED USING ANSI / BOMA STANDARD Z65.4 - 2010 METHOD 'A' FOR MULTI-UNIT RESIDENTIAL BUILDINGS. WHILE EVERY EFFORT IS MADE TO ENSURE THE ACCURACY, DIMENSIONS AND TOTAL AREA ARE NOT GUARANTEED. E&OE