



# MARIE & KIM TAVERNA

604.802.7759  
Royal LePage

kmtaverna@gmail.com  
www.marietaverna.com

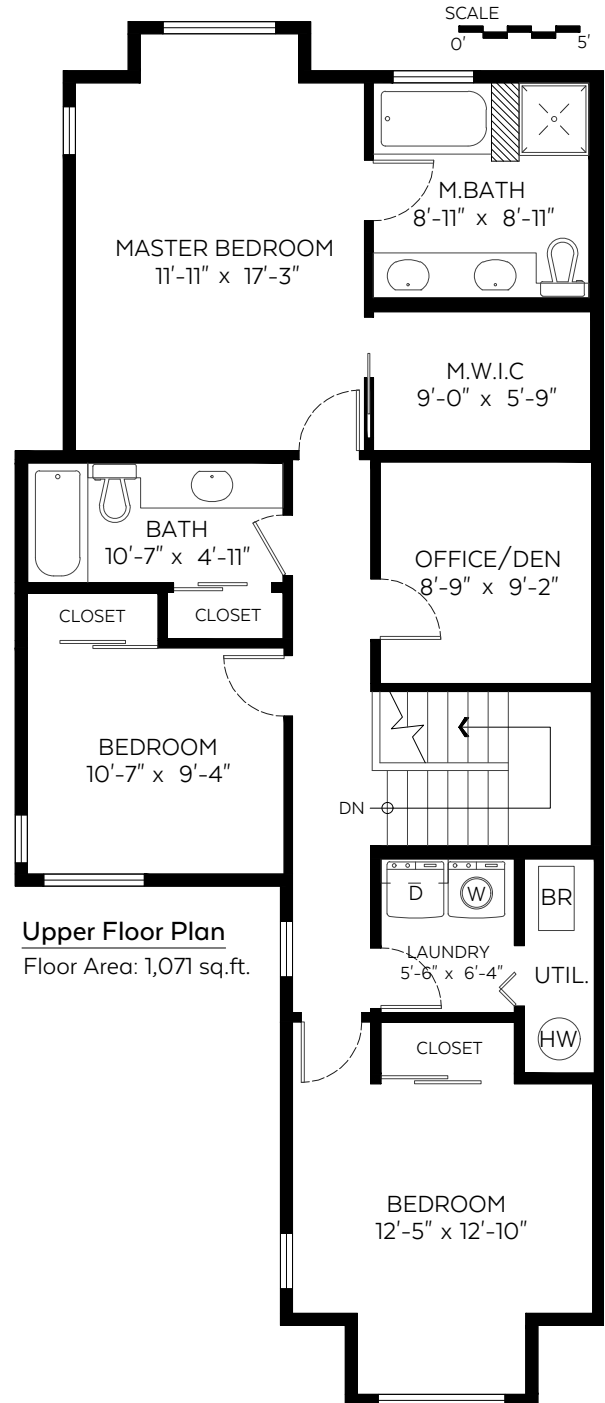
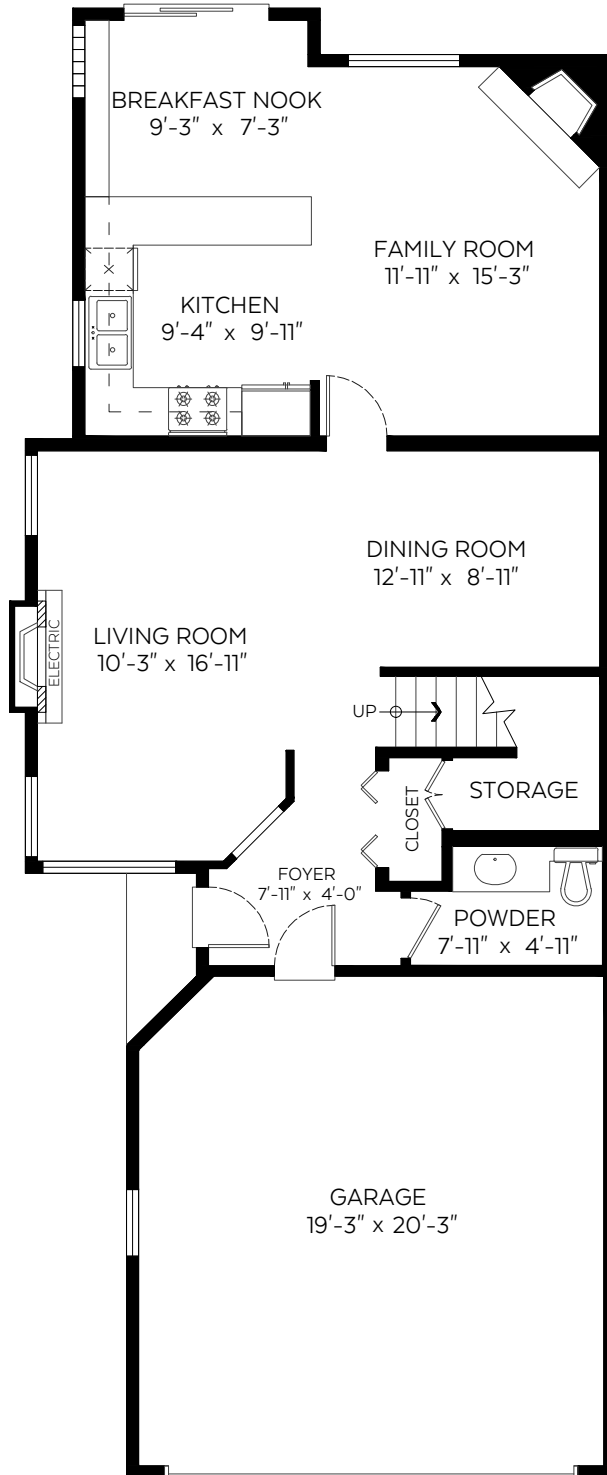


#67-9025 216 Street,  
Langley, B.C.

Main Floor:	881 sq.ft.
Upper Floor:	1,071 sq.ft.
<b>Total:</b>	<b>1,952 sq.ft.</b>

### Auxiliary Area

Garage:	412 sq.ft.
---------	------------



SCALE  
0' 5'



Measured on: Jan. 22, 2019

The floor plan is not suitable for architectural/construction and is covered under E&O. © Excelsior Measuring Inc. 2019. All rights reserved for Excelsior Measuring Inc. Users shall not publish and distribute such material (in whole or in part) and/or incorporate it in other works in any form.

