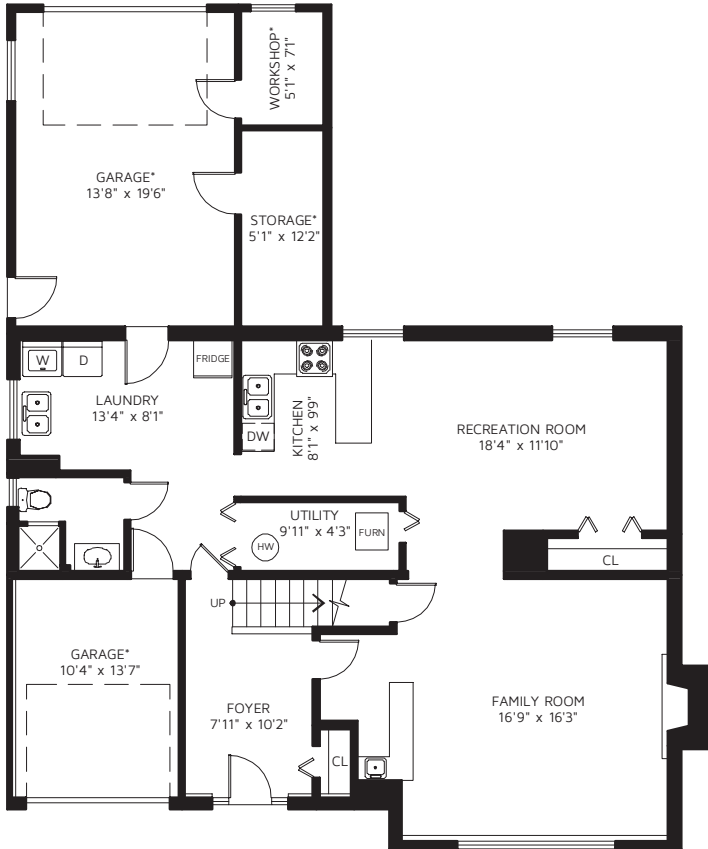


MARLENE CORNISH

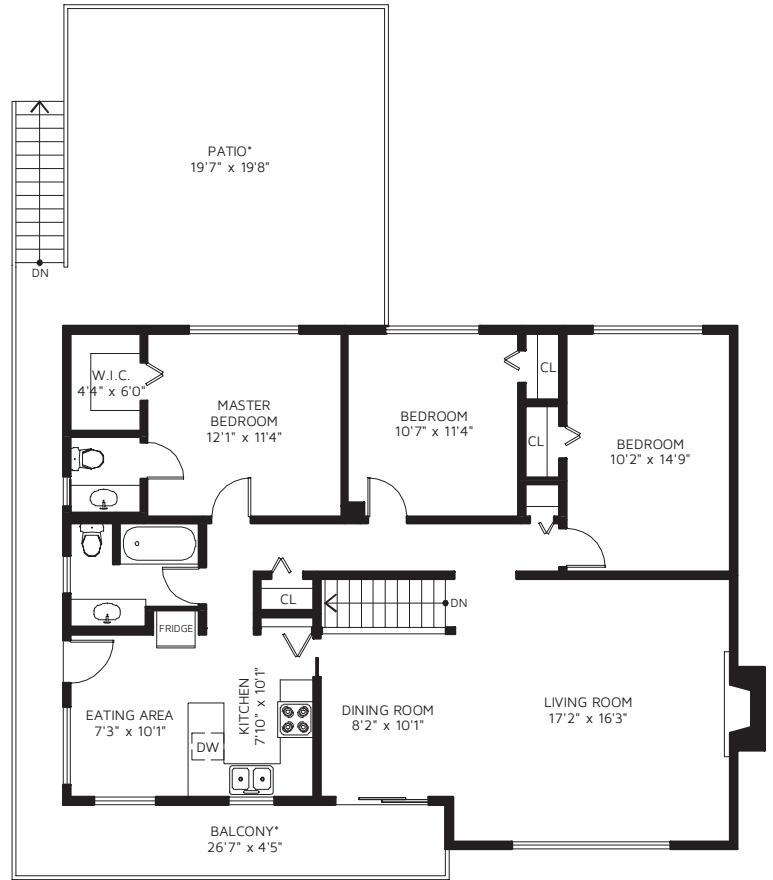
604-760-9277

bzymar@royallepage.ca

5115 HARDWICK ST, BURNABY, V5G 1P8



BELOW MAIN FLOOR



MAIN FLOOR

MAIN FLOOR	1,288	SQ FT
BELOW MAIN FLOOR	1,141	SQ FT
TOTAL FINISHED AREA	2,429	SQ FT

PATIO*	508	SQ FT
BALCONY*	125	SQ FT
GARAGE*	282	SQ FT
WORKSHOP*	45	SQ FT
STORAGE*	74	SQ FT
GARAGE*	151	SQ FT

*NOT INCLUDED IN OVERALL SQUARE FOOTAGE