

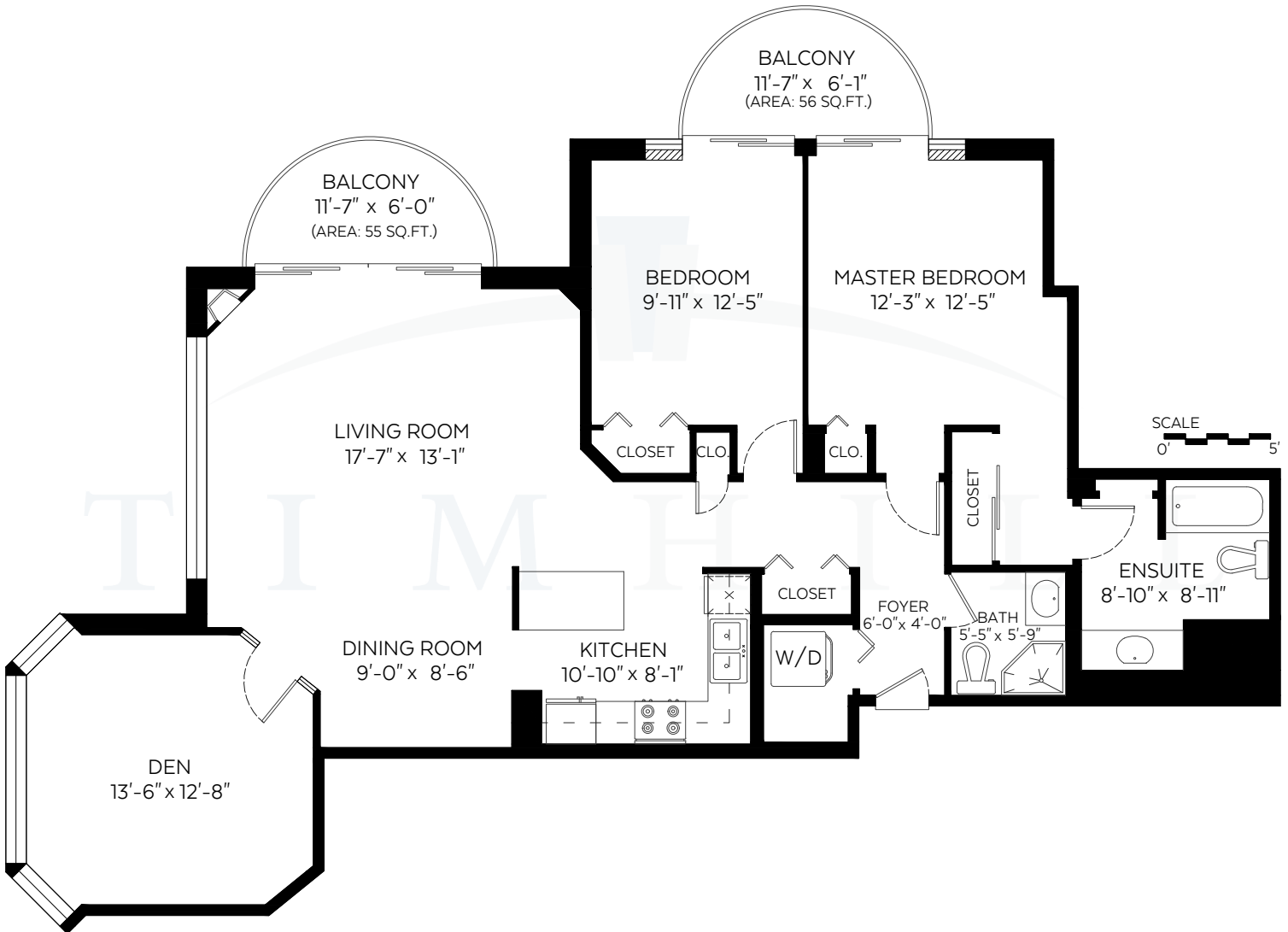


T I M H I L L

& ASSOCIATES PERSONAL REAL ESTATE CORPORATION

#205-739 Princess Street, New Westminster, B.C.

Main Floor: 1,341 SF | Balconies: 111 SF



RE/MAX Advantage Realty  
Each office is independently owned and operated

Measured on: July 6, 2018

C 604 319 4700 | F 604 526 0723 | E tim@timhillrealestate.com  
#102-321 Sixth Street | New Westminster | BC | V3L 3A7



www.timhillrealestate.com



NORTH