

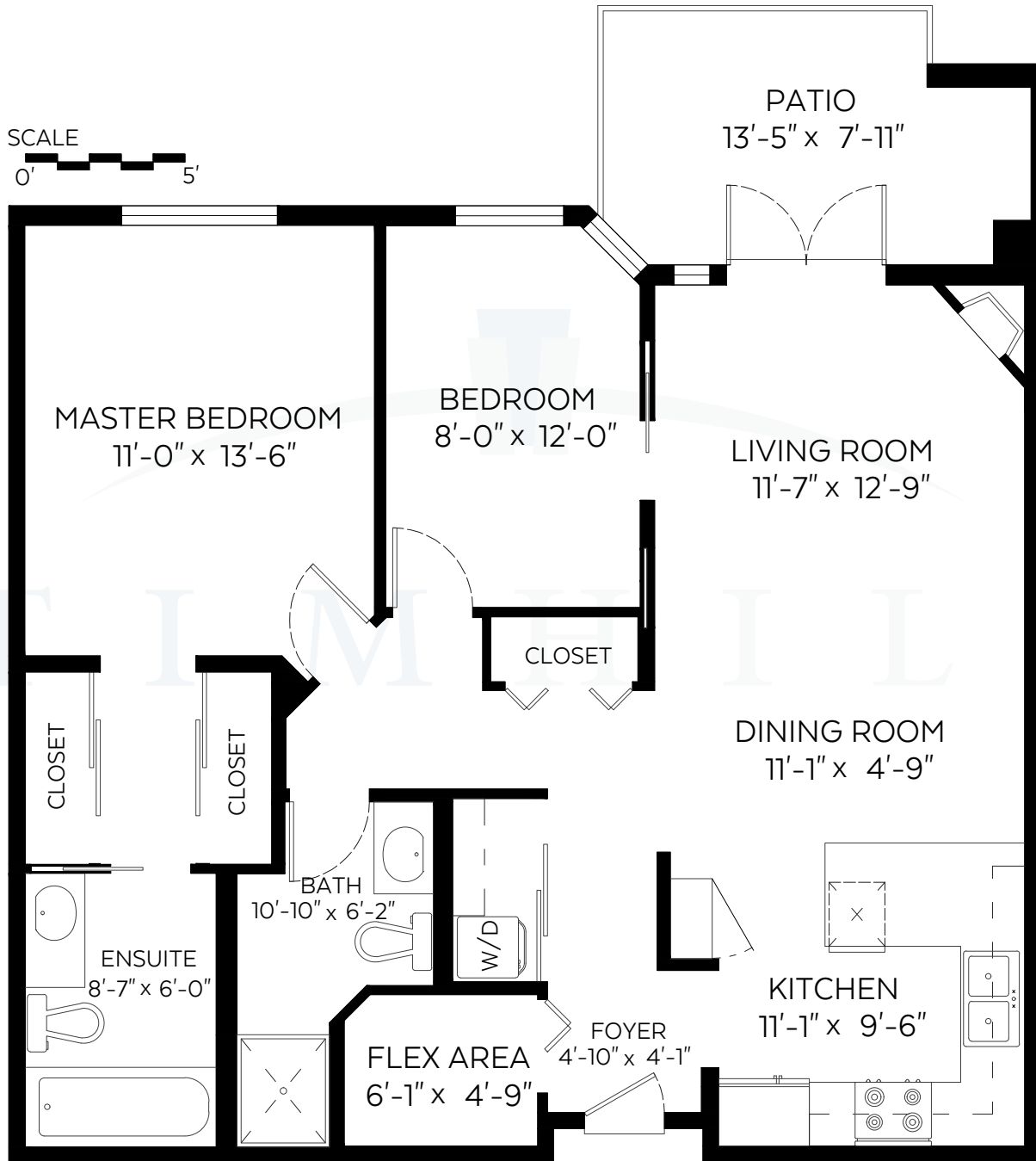


T I M H I L L

& ASSOCIATES PERSONAL REAL ESTATE CORPORATION

#120-67 Miner Street, New Westminster, B.C.

Main Floor: 940 SF | Patio: 105 SF



RE/MAX Advantage Realty
Each office is independently owned and operated

Measured on: June 18, 2018

C 604 319 4700 | F 604 526 0723 | E tim@timhillrealestate.com
#102-321 Sixth Street | New Westminster | BC | V3L 3A7



www.timhillrealestate.com



NORTH