



TIM HILL

& ASSOCIATES PERSONAL REAL ESTATE CORPORATION

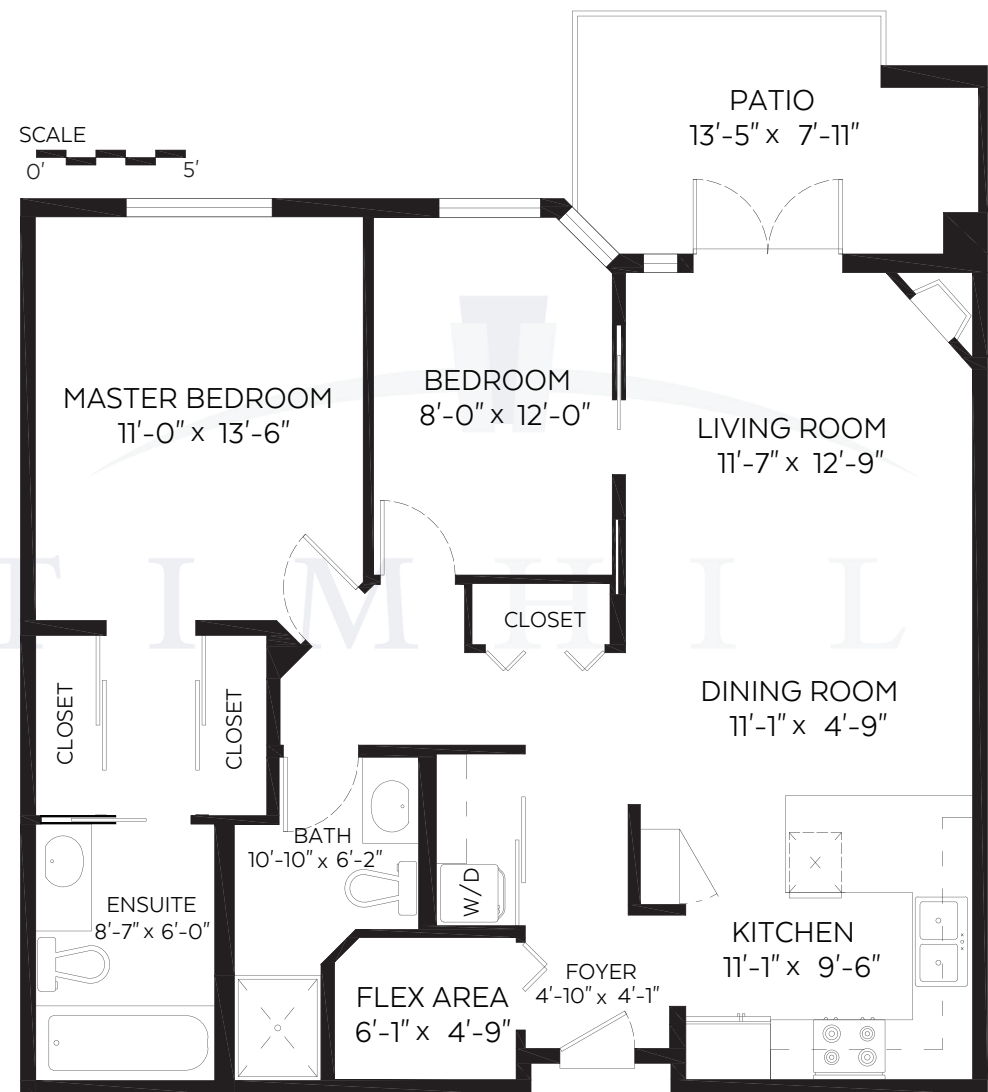


TIM HILL

& ASSOCIATES PERSONAL REAL ESTATE CORPORATION

#120-67 Miner Street, New Westminster, B.C.

Main Floor: 940 SF | Patio: 105 SF



RE/MAX Advantage Realty
Each office is independently owned and operated

Measured on: June 18, 2018

C 604 319 4700 | F 604 526 0723 | E tim@timhillrealestate.com
#102-321 Sixth Street | New Westminster | BC | V3L 3A7



www.timhillrealestate.com



NORTH

The floor plan is not suitable for architectural/construction and is covered under E&O © Excelsior Measuring Inc. 2017. All rights reserved for Excelsior Measuring Inc. Users shall not publish and distribute such material (in whole or in part) and/or incorporate it in other works in any form.

#120-67 MINER STREET | NEW WESTMINSTER



2 Bedroom
plus flex room

2 Bathroom

940 Square Feet

TIM HILL

604 319 4700 | tim-hill.ca | timhillrealestate@outlook.com



RE/MAX
Chairman's Club
Member



RE/MAX Advantage and
RE/MAX All Points
#1 Realtor for 2017



President's Club
2017

Proud Supporter

Canadian
Breast Cancer
Foundation



Children's
Miracle Network

RE/MAX Advantage Realty | 321 Sixth Street, New Westminster
This communication is not intended to cause or induce breach of an existing agency agreement.



Thinking of making a move? Call Tim at 604 319 4700 for your complimentary strategy.



Spacious kitchen with stainless steel appliances and plenty of cabinets opens to living area



Quartz island, perfect for entertainers



Well laid out open concept living



Large master bedroom suite



Bright living area features contemporary flooring and access to patio



Generously sized second bedroom



Enjoy evenings on a huge covered patio



Tastefully updated spa-like bathrooms



In-suite laundry



TIM HILL
 & ASSOCIATES PERSONAL REAL ESTATE CORPORATION

#120-67 MINER STREET | NEW WESTMINSTER



Building	Fraserview	Type	Residential Attached
Floor	940 Square Feet	Style	Apartment/Condo
Title	Freehold Strata	Year Built	1988
City	New Westminister	Included	One parking and one storage

2 Bedroom
 plus flex room

2 Bathroom

940 Square Feet



*Please note that the information contained in this package may contain errors and should be independently verified. This communication is not intended to cause or induce breach of an existing agency agreement.

For more information please call Tim at 604 319 4700