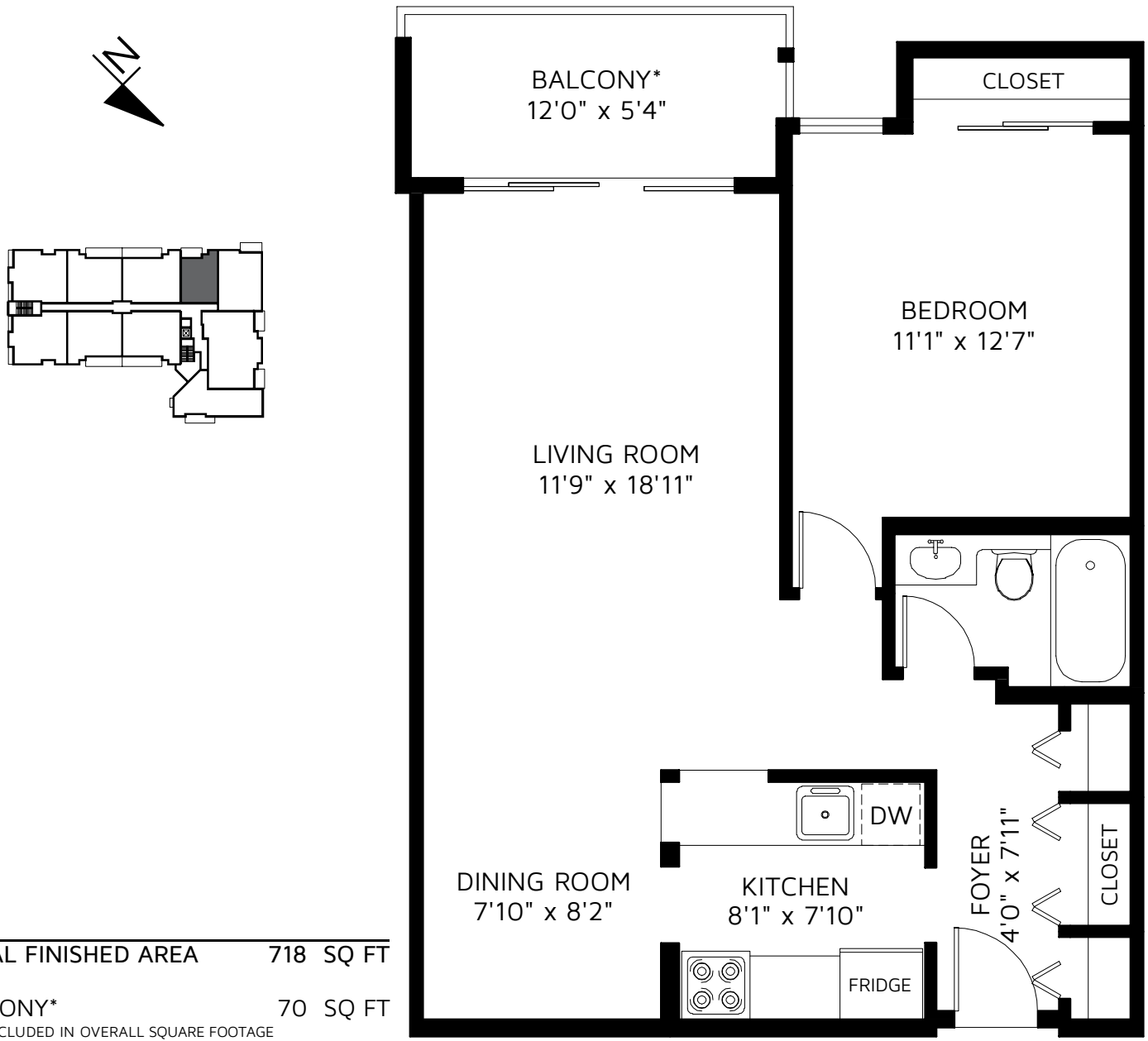


PARK WESTMINSTER

205 - 340 NINTH ST, NEW WESTMINSTER, V3M 3V6



TOTAL FINISHED AREA 718 SQ FT
 BALCONY* 70 SQ FT
 *NOT INCLUDED IN OVERALL SQUARE FOOTAGE



FLOOR PLAN IS PROVIDED BY REAL MEASUREMENTS AND RENDERINGS. FOR PROMOTIONAL USE ONLY. NOT FOR ARCHITECTURAL OR CONSTRUCTION USE. AREA IS CALCULATED USING ANSI / BOMA STANDARD Z65.4 - 2010 METHOD 'A' FOR MULTI-UNIT RESIDENTIAL BUILDINGS. WHILE EVERY EFFORT IS MADE TO ENSURE THE ACCURACY, DIMENSIONS AND TOTAL AREA ARE NOT GUARANTEED. E&OE