

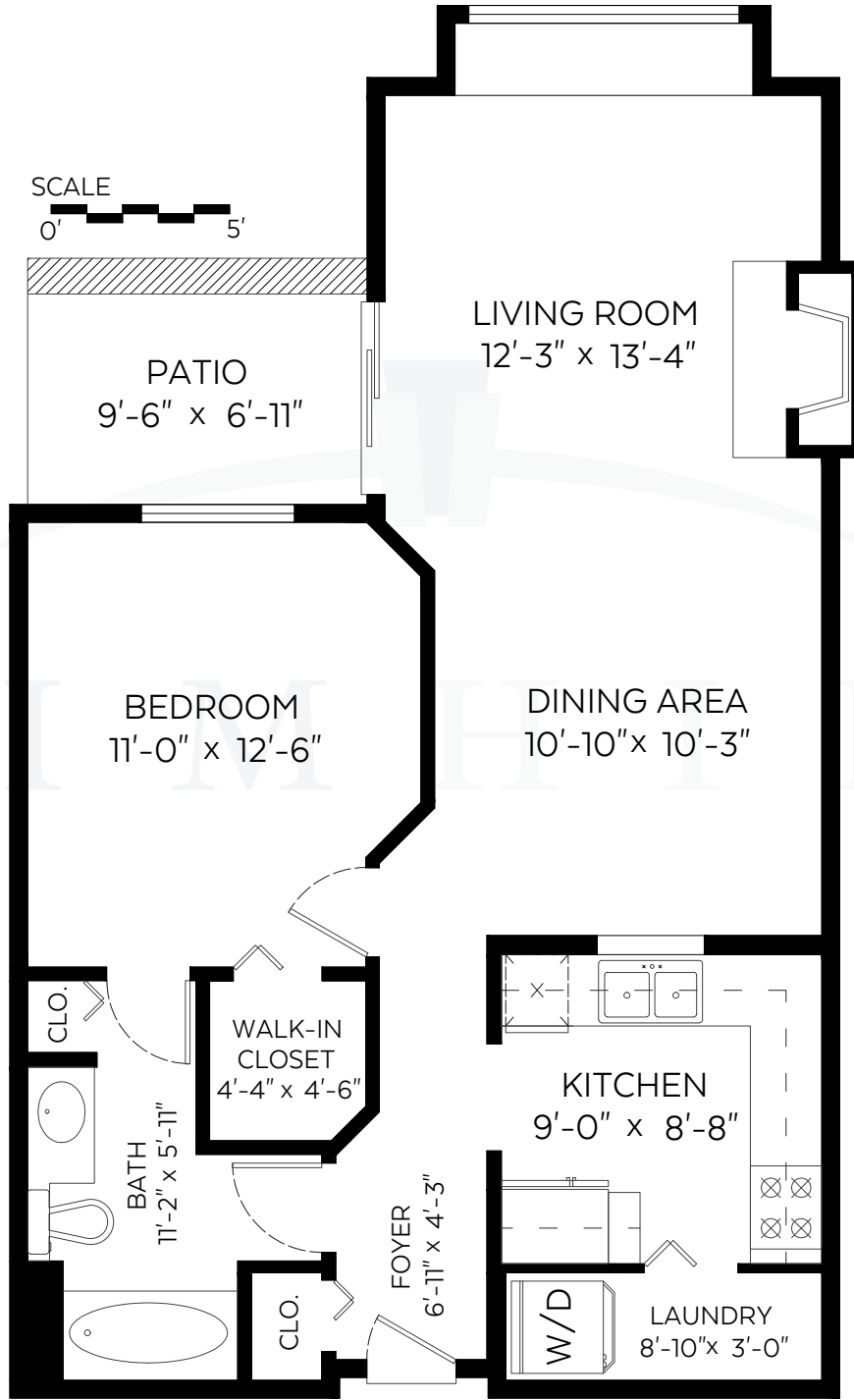


T I M H I L L

& ASSOCIATES PERSONAL REAL ESTATE CORPORATION

#223-6820 Rumble Street, Burnaby, B.C.

Main Floor: 738 SF | Patio: 66 SF



RE/MAX Advantage Realty
Each office is independently owned and operated

Measured on: June 8, 2018

C 604 319 4700 | F 604 526 0723 | E tim@timhillrealestate.com
#102-321 Sixth Street | New Westminster | BC | V3L 3A7

360hometours.ca
since 2006

www.timhillrealestate.com



NORTH