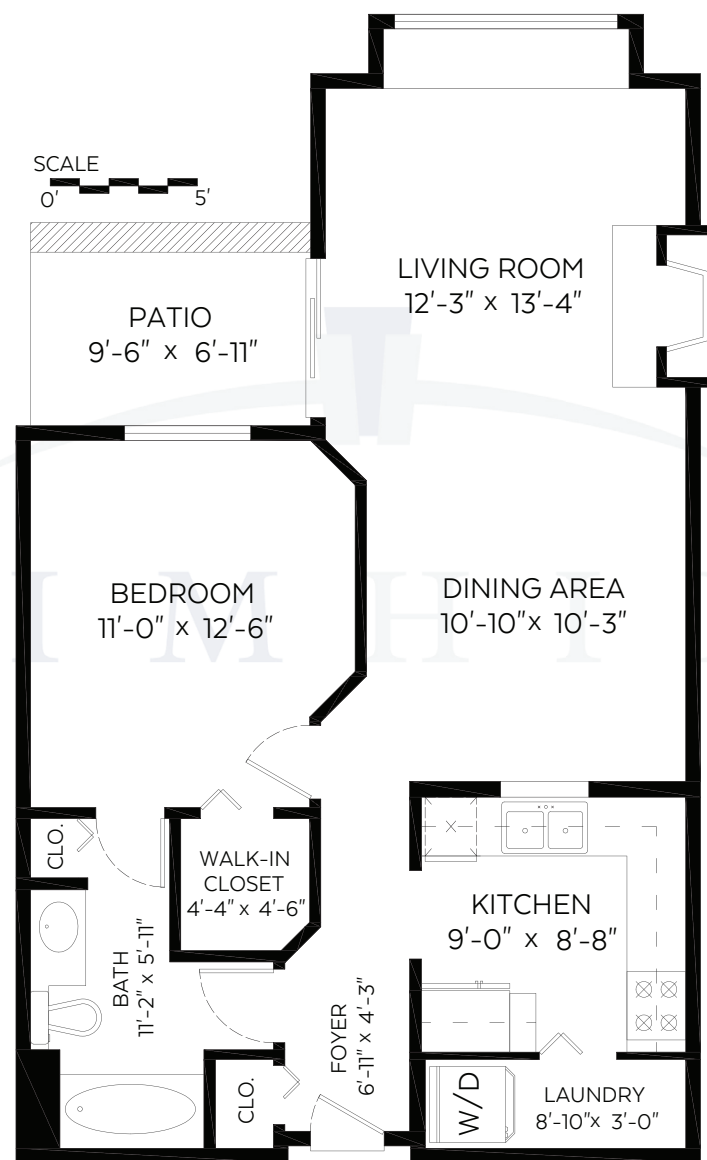




TIM HILL

& ASSOCIATES PERSONAL REAL ESTATE CORPORATION

#223-6820 Rumble Street, Burnaby, B.C.
Main Floor: 738 SF | Patio: 66 SF



RE/MAX Advantage Realty
Each office is independently owned and operated

Measured on: June 8, 2018
C 604 319 4700 | F 604 526 0723 | E tim@timhillrealestate.com
#102-321 Sixth Street | New Westminster | BC | V3L 3A7

360 hometours.ca
since 2006
www.timhillrealestate.com



The floor plan is not suitable for architectural/construction and is covered under E&O © Excelsior Measuring Inc. 2017.
All rights reserved for Excelsior Measuring Inc. Users shall not publish and distribute such material (in whole or in part) and/or incorporate it in other works in any form.

Thinking of making a move? Call Tim at 604 319 4700 for your complimentary strategy.



TIM HILL

& ASSOCIATES PERSONAL REAL ESTATE CORPORATION

#223-6820 RUMBLE STREET | BURNABY



1 Bedroom

1 Bathroom

738

Square Feet

TIM HILL

604 319 4700 | tim-hill.ca | timhillrealestate@outlook.com



RE/MAX
Chairman's Club
Member



RE/MAX Advantage and
RE/MAX All Points
#1 Realtor for 2017



President's Club
2017

Proud Supporter

Canadian
Breast Cancer
Foundation



Children's
Miracle Network

RE/MAX Advantage Realty | 321 Sixth Street, New Westminster
This communication is not intended to cause or induce breach of an existing agency agreement.





Spacious kitchen features plenty of cabinets and open to dining/living space



Enjoy evenings on a covered patio



Plenty of natural light throughout



Gas fireplace gives cozy feel



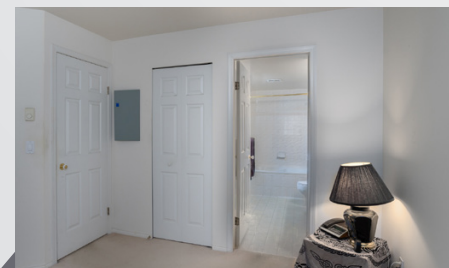
Bright living area features large windows and access to patio



Perfect for entertainers



Enjoy a large master bedroom with lots of light



Lots of closet space



Nice sized bathroom



TIM HILL
 & ASSOCIATES PERSONAL REAL ESTATE CORPORATION

#223-6820 RUMBLE STREET | BURNABY



Building	Governor's Walk	Type	Residential Attached
Floor	738 Square Feet	Style	Apartment/Condo
Title	Freehold Strata	Year Built	1992
City	Burnaby	Included	One parking and one storage

1 Bedroom | **1** Bathroom | **738** Square Feet

Welcome home to Governor's Walk! This 1 bedroom, 1 bathroom home with large rooms throughout & plenty of storage space across 738 SF is awaiting your designer ideas! Relax & get cozy in the oversized living room with a gas fireplace that's included in your monthly maintenance fees. This condo feels more like a house with an entry hallway, eating area off the kitchen & full-sized laundry room with extra storage. This home is ideal for a first-time buyer with a pro-active strata, large contingency reserve fund & new roof in 2014! Near skytrain, Byrne Creek Park, Highgate Shopping Village, schools & trails. 1 parking & 1 storage locker included. Extra parking can be rented from strata. PETS ALLOWED!

*Please note that the information contained in this package may contain errors and should be independently verified. This communication is not intended to cause or induce breach of an existing agency agreement.

For more information please call Tim at 604 319 4700