



T I M H I L L

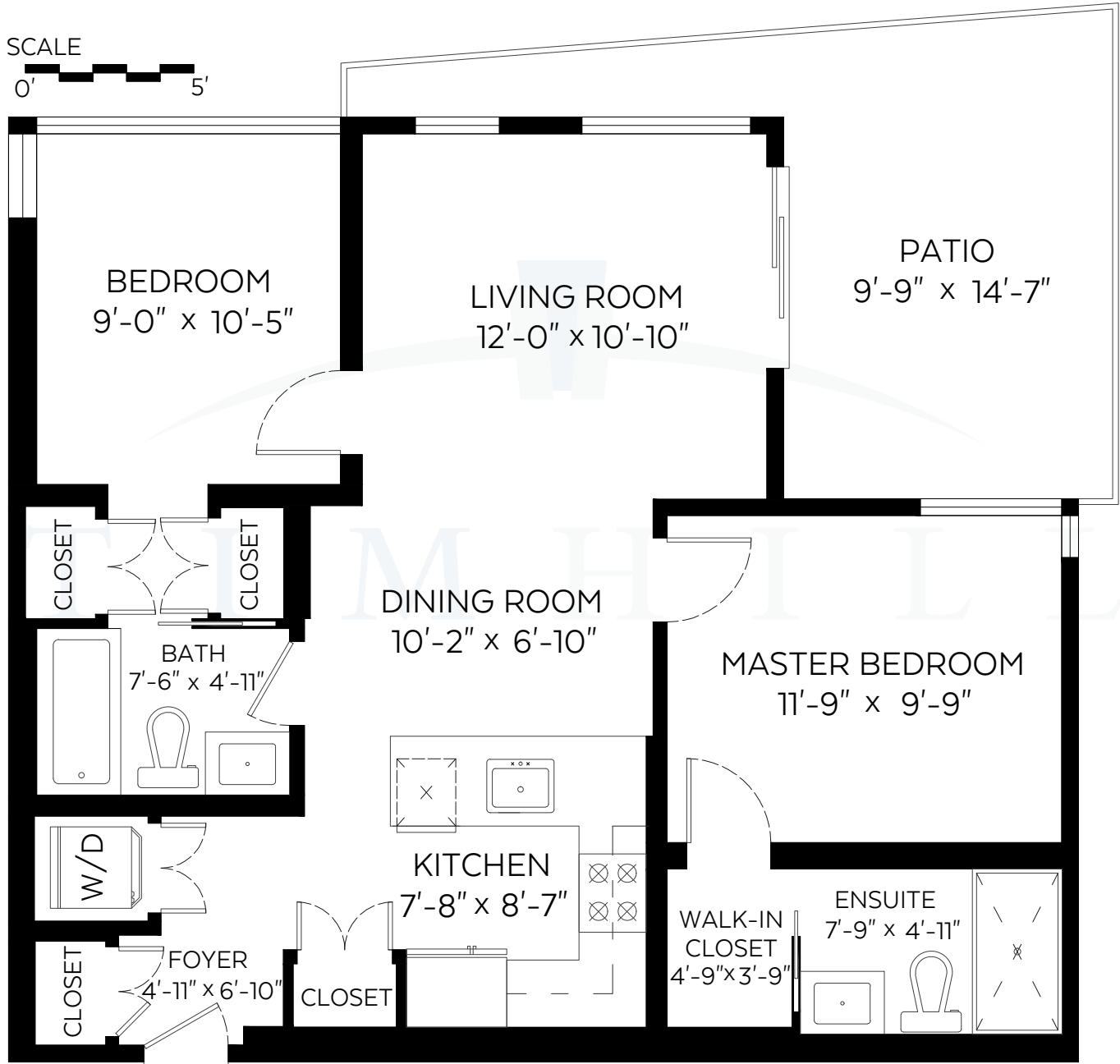
& ASSOCIATES PERSONAL REAL ESTATE CORPORATION

#209-711 Breslay Street, Coquitlam, B.C.

Main Floor*: 805 SF | Patio*: 181 SF

*As Per Strata Plan EPS 3948

SCALE



Measured on: May 25, 2018



RE/MAX Advantage Realty
Each office is independently owned and operated

C 604 319 4700 | F 604 526 0723 | E tim@timhillrealestate.com
#102-321 Sixth Street | New Westminster | BC | V3L 3A7

www.timhillrealestate.com



NORTH