

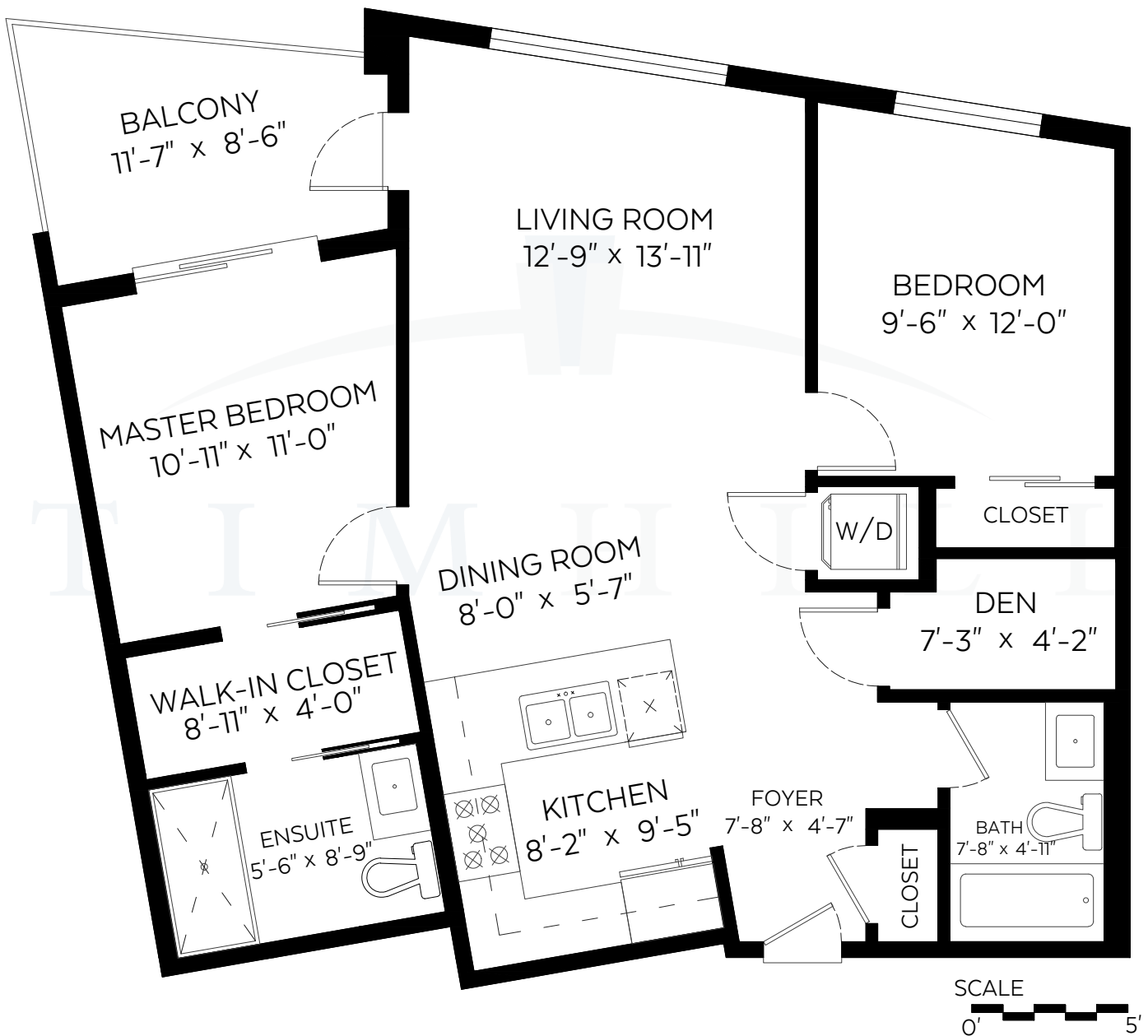


T I M H I L L

& ASSOCIATES PERSONAL REAL ESTATE CORPORATION

#306-20 E Royal Ave. New Westminster, B.C.

Main Floor: 886 SF | Balcony: 81 SF



**RE/MAX** Advantage Realty  
Each office is independently owned and operated

Measured on: May 18, 2018

C 604 319 4700 | F 604 526 0723 | E tim@timhillrealestate.com  
#102-321 Sixth Street | New Westminster | BC | V3L 3A7



www.timhillrealestate.com



**NORTH**