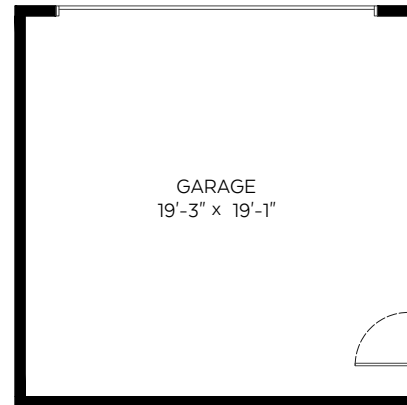
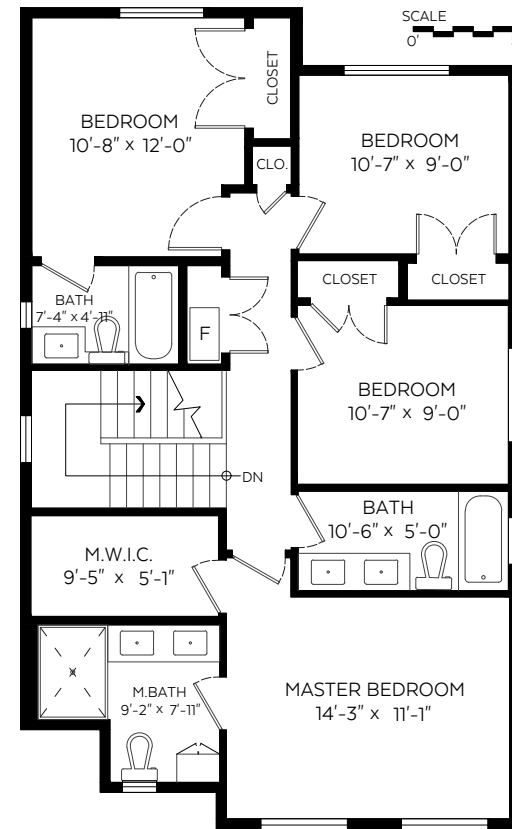
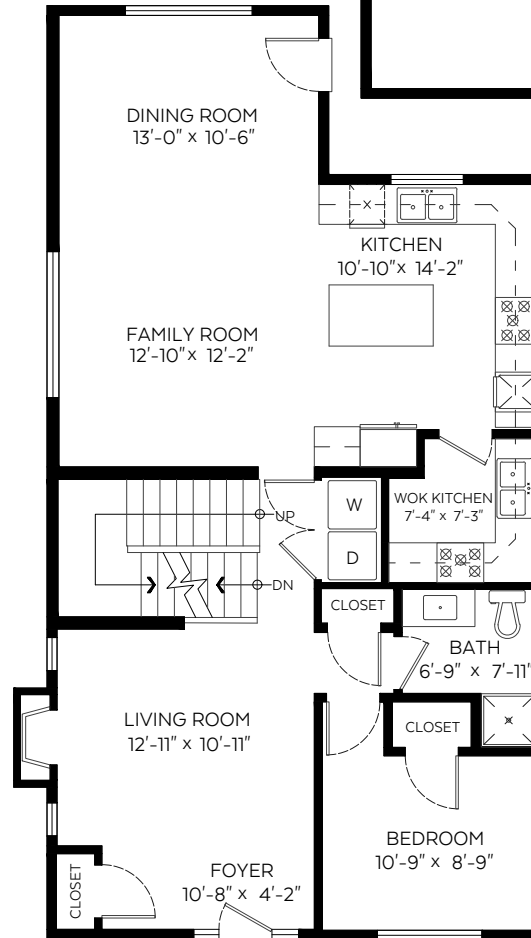
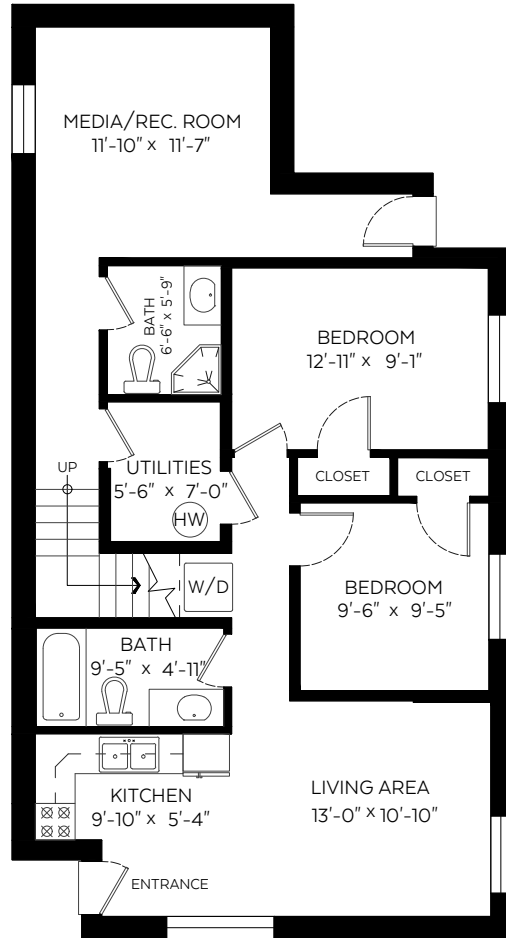


3415 Victoria Drive,
 Coquitlam, B.C.

Main Floor:	1,082 sq.ft.
Upper Floor:	971 sq.ft.
Lower Floor(Main):	409 sq.ft.
Lower Floor Suite:	644 sq.ft.
Total:	3,106 sq.ft.

Auxiliary Area

Garage:	406 sq.ft.
---------	------------



Measured on: Jan. 25, 2018

The floor plan is not suitable for architectural/construction and is covered under E.O. © Excelsior Measuring Inc. 2018. All rights reserved for Excelsior Measuring Inc. Users shall not publish and distribute such material (in whole or in part) and/or incorporate it in other works in any form.