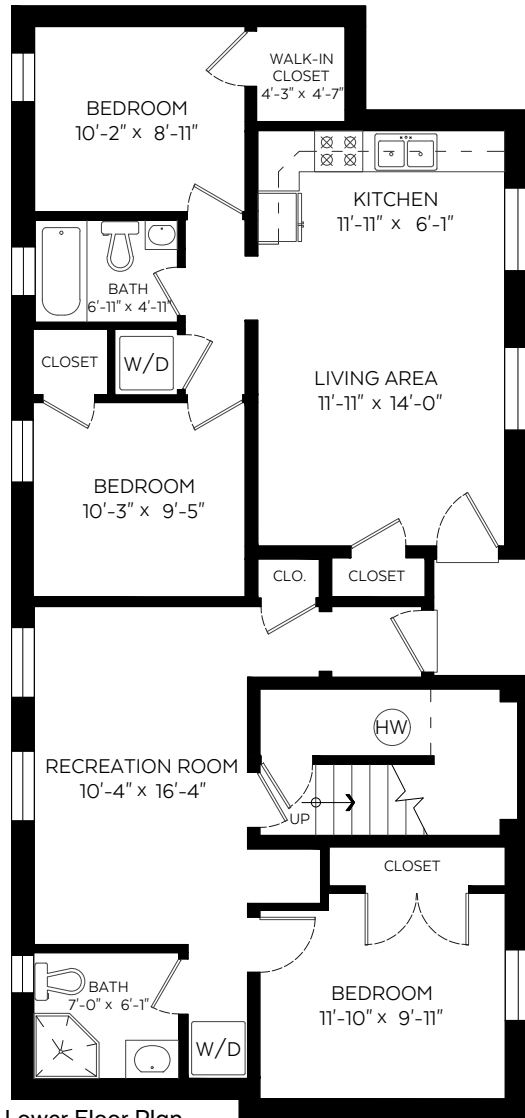


3422 Wellington Street,
Port Coquitlam, B.C.

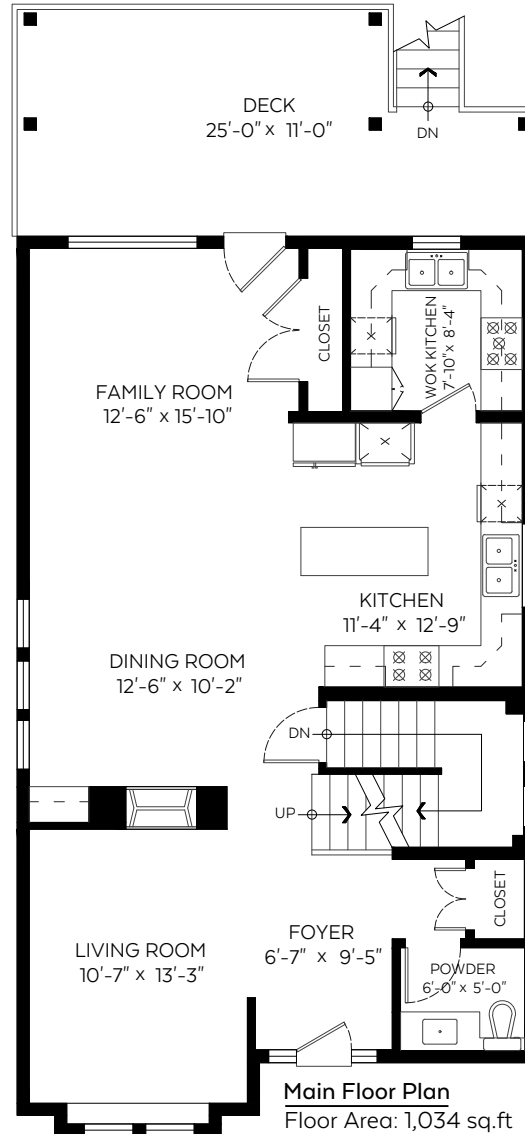
Main Floor:	1,034 sq.ft.
Upper Floor:	978 sq.ft.
Lower Floor:	1,276 sq.ft.
Total:	3,288 sq.ft.

Auxiliary Area

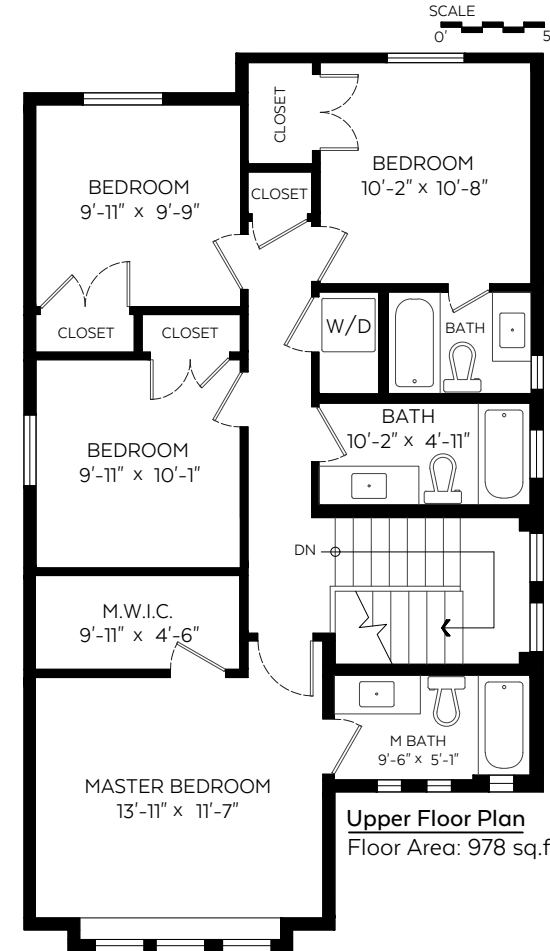
Deck:	251 sq.ft.
-------	------------



Lower Floor Plan
Floor Area: 1,276 sq.ft



Main Floor Plan
Floor Area: 1,034 sq.ft



Upper Floor Plan
Floor Area: 978 sq.ft

