



**HAFEZ PANJU**  
PERSONAL REAL ESTATE CORPORATION  
TRUST THE VALUE

**307-2559 PARKVIEW LANE, PORT COQUITLAM**

**Hafez Punju**

**604 377 3689**

[www.hafezrealty.com](http://www.hafezrealty.com)

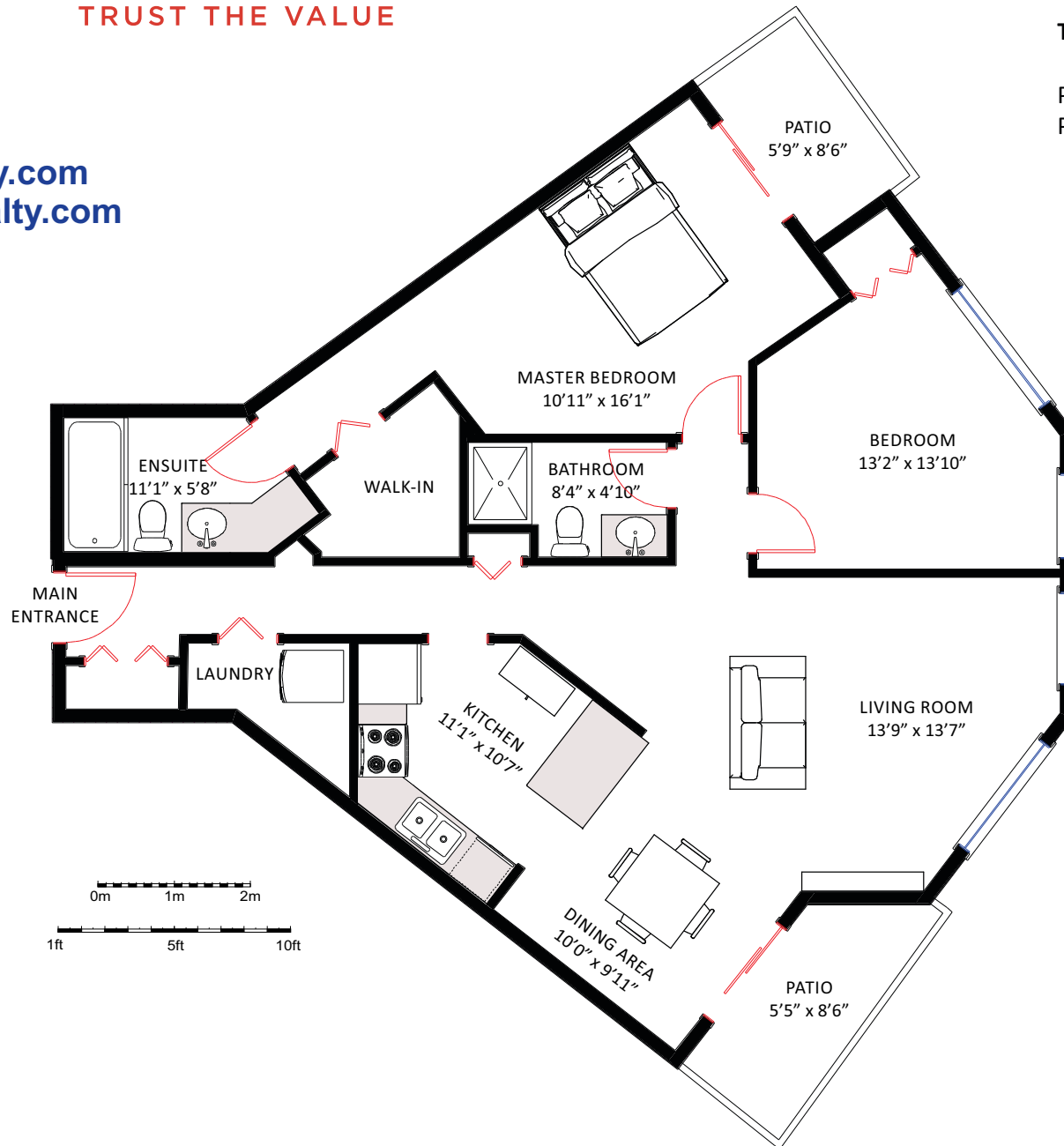
[hafez@hafezrealty.com](mailto:hafez@hafezrealty.com)

MAIN LEVEL: 1,118 sq ft

TOTAL 1,118 sq ft

PATIO (LIVING ROOM): 60 sq ft

PATIO (BEDROOM): 62 sq ft



The information in these floor plans is believed to be accurate, but not guaranteed. \* Estimate only.



MATTERPORT 3D SCANNING - PHOTOGRAPHY - FLOOR PLANS - TOURSLER INTEGRATED TOURS - VIDEO PRODUCTION - SINGLE PROPERTY WEBSITES

