

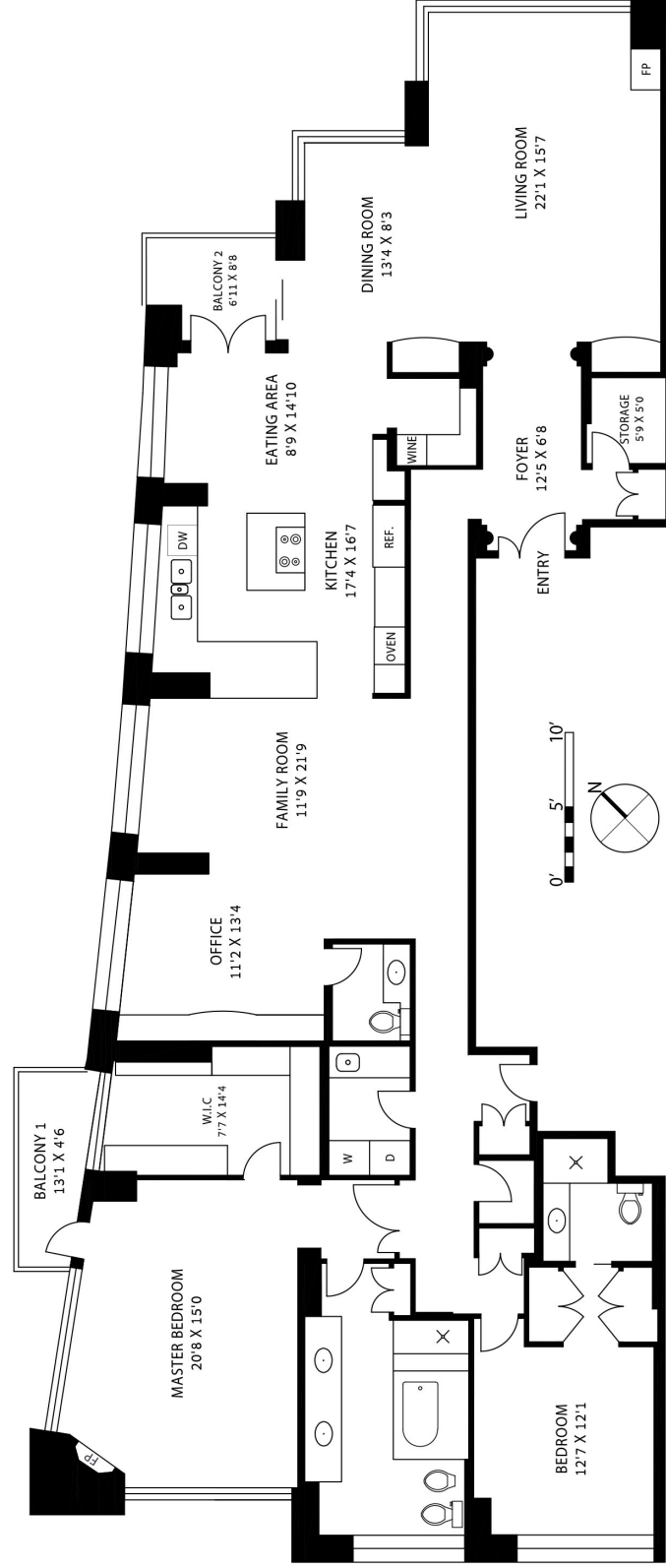
2501 - 323 JERVIS ST  
VANCOUVER, BC

PRESENTED BY:

**HARDY MAIER**

604.418.4897

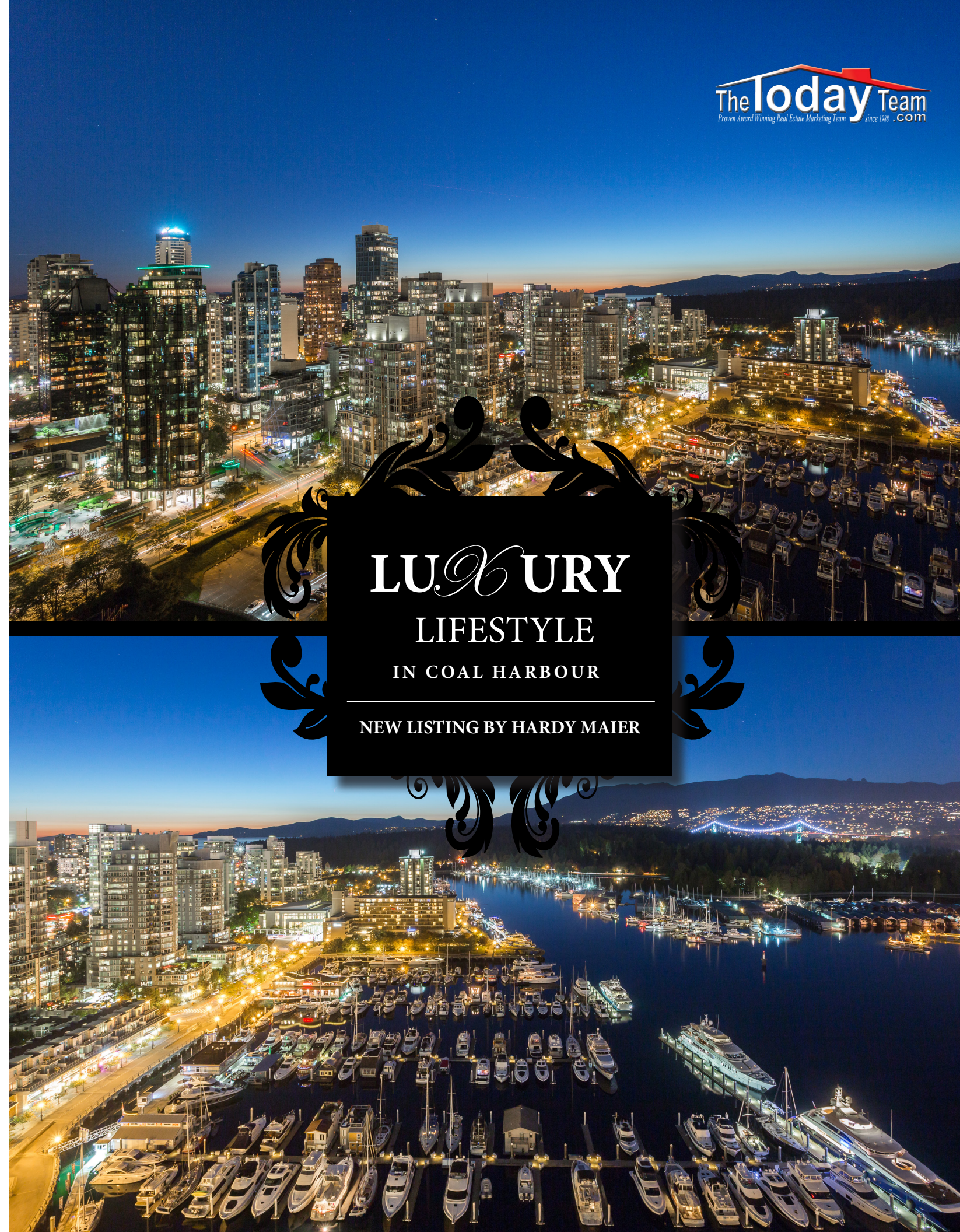
hardy@royallepage.ca



**TOTAL** 3039 sqft  
BALCONY 1 59 sqft  
BALCONY 2 54 sqft



THIS FLOORPLAN IS FOR ILLUSTRATION PURPOSES ONLY AND ALL DIMENSIONS SHOULD BE CONSIDERED APPROXIMATE



**LUXURY**  
LIFESTYLE  
IN COAL HARBOUR  
NEW LISTING BY HARDY MAIER







**THE  
E S CALA**

**2501-323  
JERVIS STREET**



FOR MORE INFORMATION ON THIS PERFECT LIFESTYLE LISTING CONTACT



**HARDY  
MAIER**



604.418.4897  
hardy@thetodayteam.com

THE VERY BEST is what you can expect in this very rare offering.

The Escala is one of the most sought after properties in Coal Harbour and it's proximity to the waterfront, marina and spectacular views are exceptional. 270 degree West, North & South views make each window the perfect picture. This half floor sub pent-house was customized at time of inception with all the expected upgrades. Designer kitchen, high end appliances, porcelain flooring, tasteful wall coverings & paint.

The floor plan was created for luxury living and entertaining. A perfect lifestyle, 24 hour concierge service with 3 parking spaces including a 2 car enclosed garage, large storage, pool, spa, exercise room and everything downtown Vancouver has to offer.

**\$10,000,000**

**2 BEDROOMS**

**3 BATHS**

**3039 SQUARE FEET**

**BUILT IN 2002**

